



**EXCEPTIONAL CARE
LEADERS IN RESEARCH
PARTNERS IN WELLBEING**

NORTHERN SYDNEY LOCAL HEALTH DISTRICT

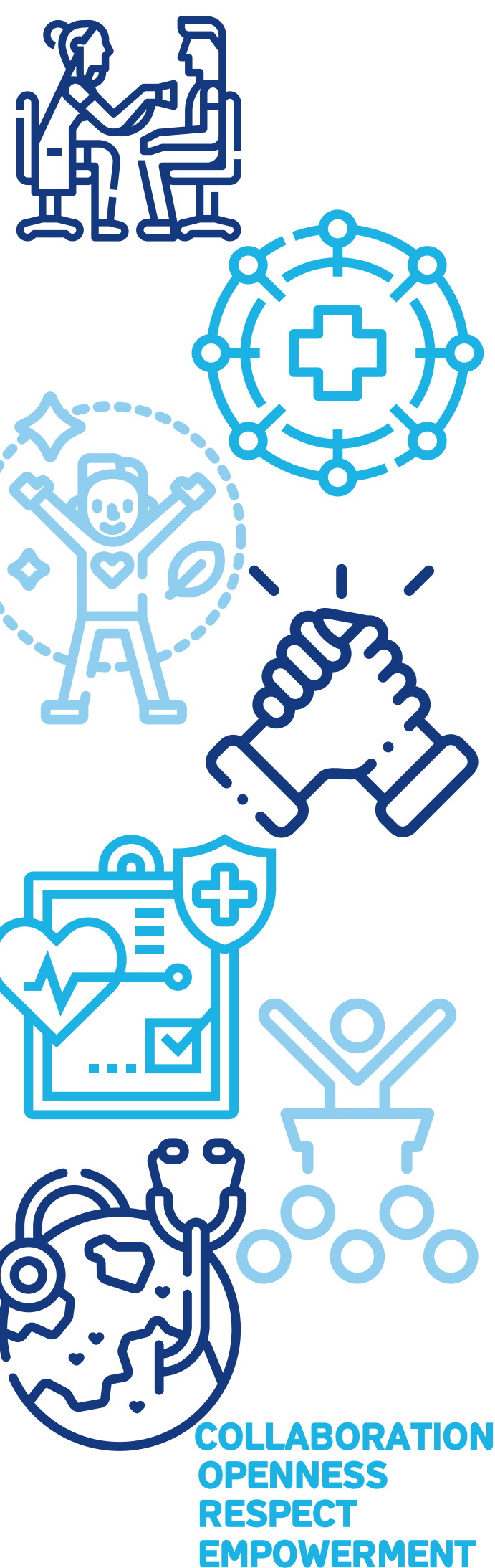
EXCEPTIONAL PEOPLE AWARDS

NOMINATION GUIDE AND FORM

for staff and volunteers nominating staff and volunteers



Northern Sydney
Local Health District



NORTHERN SYDNEY LOCAL HEALTH DISTRICT EXCEPTIONAL PEOPLE AWARDS 2023.

We are very excited to bring you the Exceptional People Awards 2023.

This awards program is one way in which we can formally recognise and thank our staff for the incredible work they do every day to deliver excellent health and wellbeing outcomes for our patients and consumers.

It is through the talents and efforts of our exceptional employees that we follow our purpose and deliver our vision.

Our Purpose is:

Transforming healthcare through innovation, research and partnerships, for our patients, community and staff

Our Vision is:

Exceptional Care, Leaders in Research, Partners in Wellbeing

Any employee or volunteer can be recognised, from our dedicated front line clinicians through to our amazing support teams.

We are seeking nominations for those people you work alongside who may have brought new ideas and innovation to how we deliver our services, those who contribute their best every day, who go that extra step to make a difference.

Finalists will be invited to attend an award luncheon in March 2024 where the winners will receive their awards.

Nominations will close on Friday 15 December 2023 at 5pm.

The judges consist of a variety of General Managers, Senior Staff and the Executive across NSLHD, as well as Consumer representatives from the general public. To nominate a person or team, please complete the [online nomination form here](#). If you have any questions or require any help, please email NSLHD-ODTeam@health.nsw.gov.au.

Anthony Schembri
Chief Executive, NSLHD

AWARDS

There are eight categories for the Exceptional People Awards based on the themes in the NSLHD Strategic Plan 2023-2027, and the CORE Values and Behaviours Charter and Leadership. You can nominate more than one person or team, using a separate nomination form for each.

All nominations for the Exceptional People Awards will be judged by a panel based on the criteria outlined after each category description. The judging panel consists of 3 judges per category, who individually judge each application on its written submission, and then these are discussed by all 3 judges to determine the winner. The categories are as follows:

1. Partnering with Consumers & Carers Award



An individual employee or team who has demonstrated active involvement, co-design and/or partnership with consumers/carers ensuring positive experiences of care. This award recognises those that have successfully involved consumers/carers in informed decision making about their care, and/or implemented service development initiatives and evaluation methodologies that incorporate consumer voice.

CRITERIA	Weighting
The extent to which the nomination demonstrates:	
- Active involvement, co-design and/or partnership with consumers/carers ensuring positive experiences of care	20
- Involvement of consumers/carers in informed decision making about their care	10
- Implementation of service development initiatives and/or evaluation methodologies that incorporate consumer voice	10
TOTAL	40

This award is open for submissions for both teams and individual employees.

2. Safe & Connected Care Award



An individual or team who has demonstrated safe, high quality, well-connected, inclusive and personalised care with good clinical outcomes. This award recognises those who have developed systems to support patients/consumers to better navigate the healthcare system across various healthcare settings leading to an improved patient/consumer experience of care.

CRITERIA	Weighting
The extent to which the nomination demonstrates:	
- Delivery of safe, high quality, well-connected, inclusive and personalised care with good clinical outcomes	20
- Implementation of systems to support patients/consumers to better navigate the healthcare system across various healthcare settings	10
- Delivery of improved patient/consumer experience of care	10
TOTAL	40

This award is open for submissions for teams, individual employees, volunteers or consumer advocates. A team winner, an individual winner, a volunteer winner and consumer nominated winner will be announced.



3. Healthy & Well Communities Award

An individual or team who has contributed towards reducing the burden of chronic disease for vulnerable or marginalised groups or priority populations, through the delivery of inclusive policies, programs, services or collaborative partnerships that improve health or promote wellness. This award recognises those who have made inroads to redress health inequity in our community, including interventions that target the social or environmental determinants of health.

CRITERIA

Weighting

The extent to which the nomination demonstrates:

- | | |
|---|----|
| - Contribution to reduction of the burden of chronic disease through the delivery of inclusive policies, programs, services or collaborative partnerships that improve health or promote wellness | 20 |
| - Support to vulnerable, marginalised groups/priority population(s) | 10 |
| - Implemented initiatives that redress health inequity and target the social or environmental determinants of health | 10 |

TOTAL

40

This award is open for submissions for both teams and individual employees.



4. Engaged & Supported People Award

An individual employee or team who has been inclusive and empowered staff to deliver innovative, safe and reliable person-centred healthcare. This award recognises those who have positioned their team to meet the demands of the healthcare system of the future, by improving staff capability, harnessing diverse viewpoints or, by ensuring staff feel valued resulting in a positive and inclusive organisational culture.

CRITERIA

Weighting

The extent to which the nomination demonstrates:

- | | |
|---|----|
| - Initiatives that include and/or empower staff to support adaptation to the changing needs of healthcare | 20 |
| - Implemented culture initiatives that improve staff capability and/or harness diverse viewpoints | 10 |
| - Initiatives that result in staff feeling valued and deliver enhancements to organisational culture | 10 |

TOTAL

40

This award is open for submissions for both teams and individual employees.



5. Research, Innovation & Digital Health Award

This award recognises an individual or team who has delivered outstanding outcomes in the area of research, digital health and innovation. This award recognises those that have advanced and/or translated research into clinical practice, harnessed the power of data or digital systems to deliver healthcare improvements, or empowered our patients/consumers/partners/staff to better engage with the digital healthcare environment.

CRITERIA

Weighting

The extent to which the nomination demonstrates:

- | | |
|--|----|
| - Execution of an initiative in the area of research, or; digital health, or; innovation | 20 |
| - Interventions that either; empower patients/consumers/partners/staff to better engage with the digital healthcare environment, or; translate research into clinical practice | 10 |
| - Delivery of improved healthcare outcomes for patients and consumers | 10 |

TOTAL

40

This award is open for submissions for both teams and individual employees.



6. Sustainability & Planetary Health Award

An individual or team who has demonstrated an outstanding commitment to planetary health by delivering initiatives that maximise value from existing resources and reduce waste in the healthcare system. This award recognises those who positively impact planetary health whilst adhering to robust corporate/clinical governance standards, by optimising the use of resources to support efficient and effective care.

CRITERIA	Weighting
The extent to which the nomination demonstrates:	
- Delivery of planetary health initiatives that maximise value from existing resources and reduce waste in the healthcare system	20
- Adherence to robust corporate/clinical governance standards	10
- Interventions that optimise the use of resources to support efficient and effective care	10
TOTAL	40

This award is open for submissions for both teams and individual employees.

COLLABORATION
OPENNESS
RESPECT
EMPOWERMENT

7. CORE Values & Behaviours Award

An individual or team who embodies the CORE values of the District. This award recognises an individual or team for consistently demonstrating positive behaviours that align with the NSW Health CORE values of Collaboration, Openness, Respect and Empowerment, thereby seeking to continue to build a more positive and inclusive culture by living the CORE values.

CRITERIA	Weighting
The extent to which the nomination demonstrates:	
- Collaboration	10
- Openness	10
- Respect	10
- Empowerment	10
TOTAL	40

This award is open for submissions for teams, individual employees, volunteers and consumer Advocates.



8. Leadership Award

An individual employee who demonstrates exemplary leadership skills, who always acts with integrity and consistently inspires their team to deliver results for the communities we serve. This award recognises individual employees who are currently in a leader, manager or mentor role and those who are emerging leaders early in their career, displaying a commitment to quality and safety, providing a clear vision, empowering teams to work collaboratively to achieve outcomes and creating a culture of high performance and belonging.

CRITERIA	Weighting
The extent to which the nomination demonstrates:	
- Inspiration for staff, clear vision and mobilisation of team to achieve goals linked to individual, team, hospital or service plans and the district strategic plan	20
- Support of individuals in the team through effective performance development	10
- Support of teams to work collaboratively to improve quality and safety	10
TOTAL	40

This award is open for submissions for individual employees only.

KEY DATES



Entries
open
Now

Entries close
5pm,
15 December
2023

Judging
commences
18 December
2023

Nominee and
Finalist Event
Invitations
Mid-January 2024

Winners
Announced
5 March 2024

Staff Eligibility

Nominees must be either employees of Northern Sydney Local Health District, or HealthShare NSW and Pathology North employees whose work location is based at a NSLHD facility (either temporary, permanent, casual or on secondment from another NSW Health entity).

Volunteers and consumer advocates of Northern Sydney Local Health District can be nominated.

Nominees whose employment is subject to disciplinary action or investigation are not eligible.

Staff who are on the NSLHD Workforce and Culture Strategic Steering Group or members of the Executive Leadership Team (ELT) are not eligible to nominate or be nominated to avoid any conflict of interest, with the exception of the Leadership Award category, where members of the Executive Leadership Team may be nominated.



Nomination Guidelines

Entries for the NSLHD Exceptional People Awards 2023 are to be made as follows:

- › Entries can be made by NSLHD employees, volunteers and consumer advocates, patients and consumers and other NSW Health staff
- › Staff members cannot nominate themselves, or their own team
- › All entries must be made using the online nomination form. Please click [here](#) to submit your nomination
- › Late and incomplete entries will not be considered
- › All finalists will be considered for appropriate external and statewide award programs
- › The judging panel reserve the right to verify the content and merit of entries with the individual or team's manager or service director
- › Previous winning projects/individuals are not to be re-submitted. However, where significant new developments have taken place (e.g. follow-up outcome evaluation of a previous project) an entry may be made provided that:
 - a) Substantial work involving new information, concepts or initiatives are presented, and
 - b) The entry focuses on the new work rather than re-presenting previous work
- › Each nomination is to be allocated into one category by the nominator. The judges reserve the right to change the category to which the nomination was allocated



To nominate a person or team, please scan the QR or visit <https://bit.ly/45E8rGf> and complete an online nomination form. If you wish to nominate more than one individual or team, please submit a separate nomination form for each.

SCAN TO NOMINATE

