



# Manly AYA<sup>H</sup>

The Manly Adolescent and Young Adult Hospice (AYA<sup>H</sup>) is Australia's first dedicated inpatient service caring for young people aged between 16 to 30 years who have a life limiting illness. The AYA<sup>H</sup> provides elective and emergency respite care, complex symptom management, a location for step down care after an acute hospital admission and end of life care.



Northern Sydney  
Local Health District

---

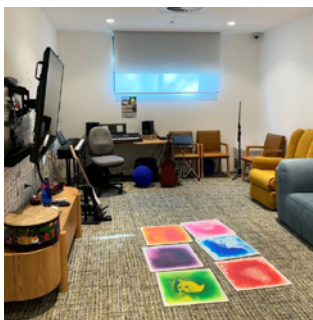
## Our service

The AYAH provides holistic, specialised care for patients and their families, including bereavement support and counselling. It delivers care tailored to young people and their unique needs, provides dedicated and professional support for families, reduces the need for extensive travel for rural patients, and focuses on providing complex care in a home like environment.



## Our team

- » Services Manager
- » Nurse Unit Manager (NUM)
- » Palliative Care Consultant
- » Palliative Care nursing staff
- » Social Worker
- » Clinical Psychologist
- » Bereavement Counsellor
- » Physiotherapist
- » Pharmacist
- » Occupational Therapist
- » Speech Therapist
- » Dietitian
- » Volunteer Coordinator
- » Community Partnerships Manager
- » Support and administrative staff
- » Onsite Chef and team
- » Music and Art Therapists
- » Pastoral care as required
- » & more



## Our facility

Located on the North Head Headland, the facility is surrounded by National Parks, bush land and environmental conservation areas, providing a natural and peaceful setting for young people and their families. The AYAH includes:

- » Eight bedrooms for patients, each with an ensuite and outdoor balcony
- » Two carer lounges
- » Two family accommodation units, each with two bedrooms
- » On-site dedicated kitchen and dining room
- » Breakout spaces including lounge room, activity room, games room, media room, multisensory room, music room, quiet room and sitting rooms
- » Laundry for families to use at any time
- » Large communal balcony with views of Sydney Harbour
- » Garden and landscaped areas including space for outdoor activities

## Admission criteria

For admission to the AYAH the patient must:

- » Be aged 16 to 30 years;
- » Have a life-limiting illness;
- » Have a clearly identified medical specialist/practitioner who is responsible for their care co-ordination prior to admission to the AYAH and who will accept their care again after they have been discharged from the AYAH; and
- » Require any of the following:
  - Respite care
  - Complex symptom management
  - End-of-life care
  - Step down from an acute hospital prior to discharge home

## Referral

To obtain a referral form please scan the QR code, email [nslhd-ayahmanly@health.nsw.gov.au](mailto:nslhd-ayahmanly@health.nsw.gov.au) or call (02) 9926 5700.

Please contact us if you would like to discuss suitability of referral or whether the referral meets the admission criteria.



Scan the  
QR code  
for a form

## Adolescent and Young Adult Hospice

150 Darley Road, Manly 2095

✉ [nslhd-ayahmanly@health.nsw.gov.au](mailto:nslhd-ayahmanly@health.nsw.gov.au)

☎ (02) 9926 5700

🔗 [nslhd.health.nsw.gov.au/manly/Pages/default.aspx](http://nslhd.health.nsw.gov.au/manly/Pages/default.aspx)

📘 [facebook.com/ayahmanly](https://facebook.com/ayahmanly)

📷 [instagram.com/ayahmanly](https://instagram.com/ayahmanly)